

Phonak Wireless Communication Portfolio

Product information



The accessories of the Phonak Wireless Communication Portfolio offer great benefits in difficult listening situations and unparalleled speech understanding in noise or over distance. With the latest products, making and receiving phone calls at home or on the go, watching TV, listening to music, streaming movies on a laptop or a tablet, all become more comfortable. Wireless accessories are easy to use and to demonstrate – a great way of proving benefits to your clients and to impress.

Phone solutions

Phonak EasyCall – The cell phone solution



Phonak EasyCall connects hearing aids wirelessly with any Bluetooth enabled cell phone. It binaurally streams the phone call directly to the hearing aids for maximum speech understanding.

Feature overview

- Unpack and use: no fitting required
- Works with any Bluetooth enabled cell phone, even non-smartphones
- Attached onto the cell phone, never lost or forgotten
- 10 hours talk time
- Standby time > 1 week

Compatibility:

- Use Phonak EasyCall for Spice and Quest wireless hearing aids
- Use Phonak EasyCall II for Venture and Belong™ wireless hearing aids

How to use



Phonak DECT II – The home and small office phone solution



Phonak DECT II cordless phone is easy to use and designed for people with hearing loss. It is also suitable for people without hearing loss and can be used like a regular cordless phone. The main benefit is the direct binaural streaming to both hearing aids for maximum speech understanding.

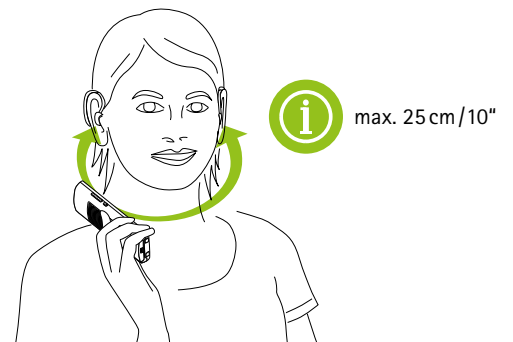
Feature overview

- Unpack and use: no fitting required
- Demo button for easy demonstration
- Simultaneous audio transmission to both hearing aids
- 1-click volume boost (up to +15 dB)
- Direct dial button for preferred number

Compatibility:

- Use Phonak DECT II for Venture and Belong wireless hearing aids

How to use



TV, music and phone solutions

Phonak ComPilot Air II – The clip-on audio streamer



Compared to ComPilot II, the small and stylish **Phonak ComPilot Air II** is focused on Bluetooth technology, to connect Phonak hearing aids wirelessly to cell phones or Bluetooth enabled music sources. It can also be used with the Phonak TVLink II or the Phonak RemoteMic.

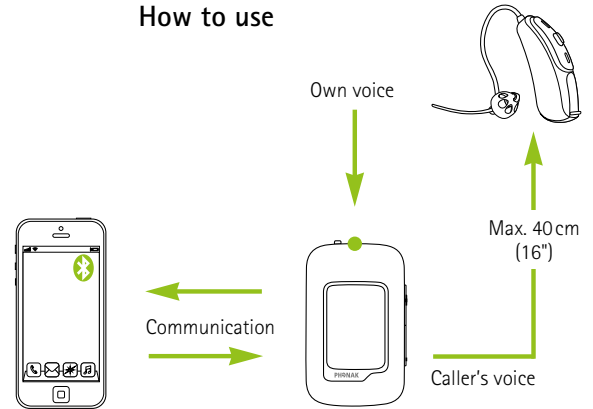
Feature overview

- Built-in demonstration capability
- No neckloop
- Clip for easy wearing
- Binaural streaming of audio signals in stereo
- Built-in remote control for hearing aids
- Spoken messages and callers name for easy interaction
- Supports the Phonak RemoteControl App

Compatibility:

- ComPilot Air II is available for Venture and Belong hearing aids

How to use



Phonak ComPilot – The multi-purpose audio streamer



Phonak ComPilot connects wirelessly to all Phonak wireless hearing aids and supports audio inputs via 3.5mm Jack and the Europlug socket. Connecting the Roger X receiver to ComPilot allows streaming from Roger microphones. It provides high quality sound when watching TV or listening to music for a longer time period.

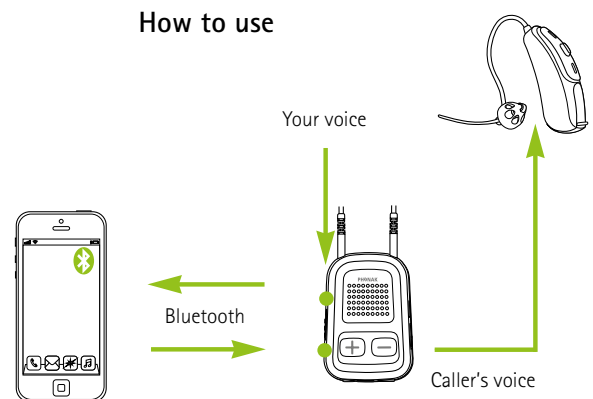
Feature overview

- Built-in demonstration sound
- Bluetooth and wired audio inputs
- More than 20 hours continuous streaming time
- Built-in remote control for hearing aids
- Binaural streaming of audio signals in stereo
- Spoken messages and callers name for easy interaction
- Exchangeable neckloop available in two colors and lengths

Compatibility:

- Use Phonak ComPilot for CORE, Spice and Quest wireless hearing aids
- Use Phonak ComPilot II for Venture and Belong wireless hearing aids

How to use



Extended streamer solutions

Phonak TVLink II – The ideal TV and music interface



Phonak TVLink II is the interface to TV and other audio sources supporting digital audio signals. The TVLink II is used with Phonak ComPilot II or ComPilot Air II and turns any Phonak wireless hearing aids into a headset with a range of up to 30 meters (100 ft). It offers stereo sound quality and low latency transmission.

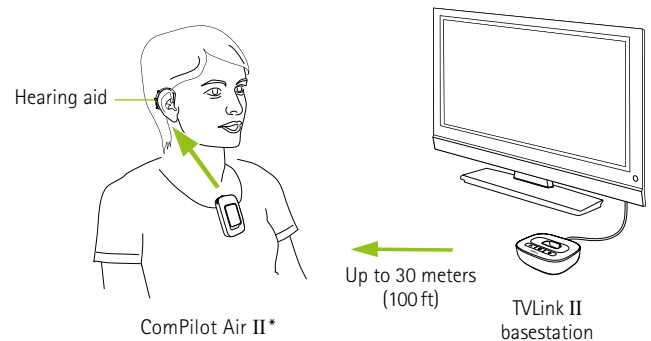
Feature overview

- Supports analog and digital (Optical, Coaxial) audio outputs
- Quick and easy installation
- Test mode for a quick audio check
- Complete set including power plug and cables
- Charging slot for ComPilot II and ComPilot Air II

Compatibility:

- TVLink II can be used with all Phonak streamers

How to use



Phonak RemoteMic – The lightweight wireless microphone



Phonak RemoteMic, is a wireless microphone for one-on-one conversations over distance. The RemoteMic is clipped onto the speaker's clothing. Combined with Phonak ComPilot II or ComPilot Air II, it transmits the speaker's voice directly to both hearing aids over a distance of up to 20 meters (66 ft).

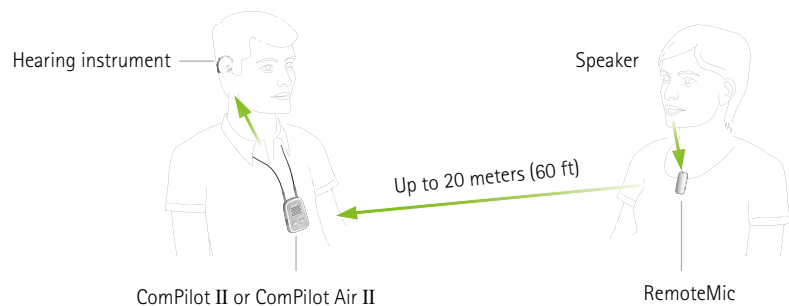
Feature overview

- Lightweight and small
- Omnidirectional microphone
- Battery powered and rechargeable
- Up to 8 hours usage time

Compatibility:

- The Phonak RemoteMic can be used with all Phonak streamers

How to use



Remote control solutions

Phonak RemoteControl App – The smart remote control



The **Phonak RemoteControl App** offers advanced remote control functions for Phonak hearing aids and configuration options for Phonak streamers using a smartphone. This app is available for Android and iOS.

Feature overview

- Individually control the listening directions (Speech in 360°)
- Individual L/R volume control
- Direct selection of program and audio sources
- Configuration of Phonak streamer settings
- Battery & Link status
- Easy pairing help for Phonak streamers

Compatibility:

- The RemoteControl App requires a Phonak ComPilot II or ComPilot Air II streamer

How to use

For more information and download of the RemoteControl App visit the website:



www.phonakpro.com/rc-app

Phonak PilotOne II – The discreet remote control



The **Phonak PilotOne** is designed for simplicity and ease-of-use.

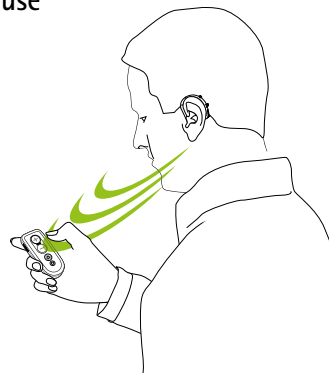
Feature overview

- Easy volume and program selection
- Home button switches to default program
- Key lock function

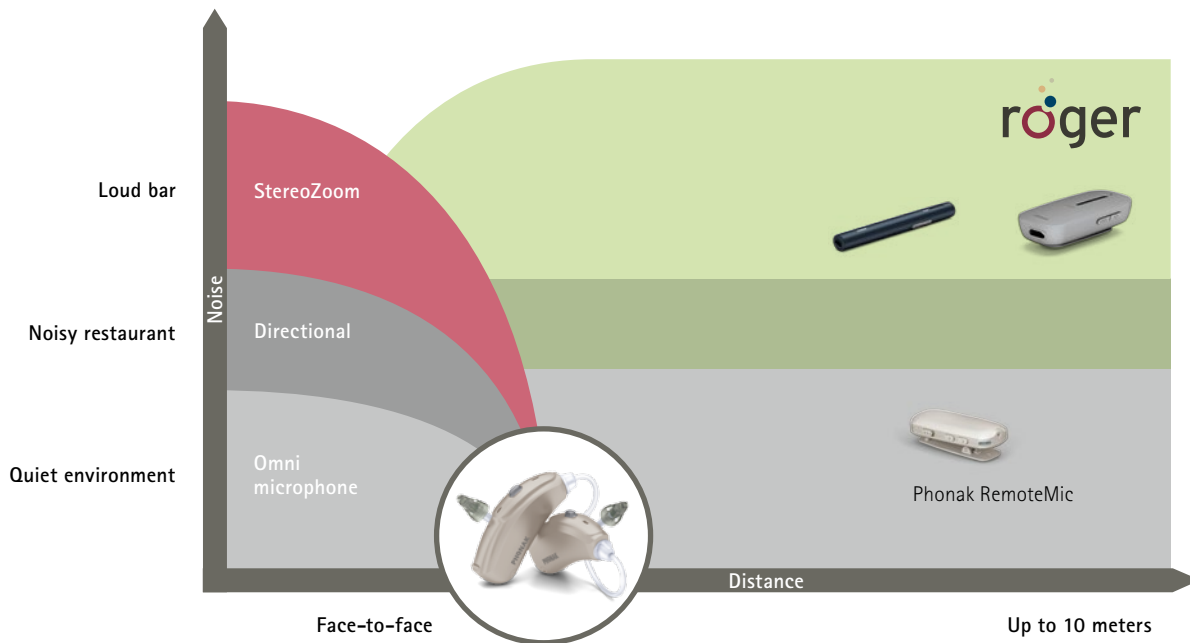
Compatibility:

- Use Phonak PilotOne for Spice and Quest wireless hearing aids
- Use Phonak PilotOne II for Venture and Belong wireless hearing aids

How to use



Solutions for understanding in noise and over distance



Roger Pen – Hearing better than people with no hearing loss

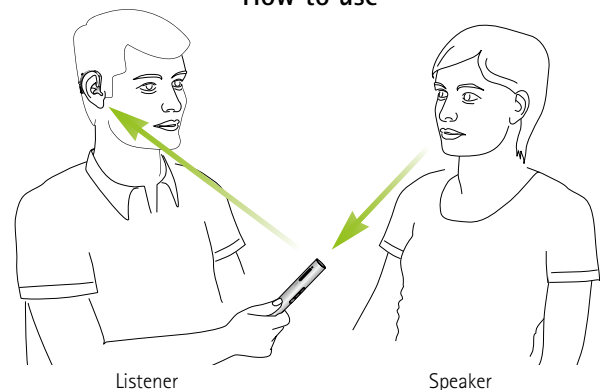


On the cutting edge of technology, the **Roger Pen** is the ultimate accessory for understanding over a distance, as well as in background noise. The Roger Pen is fully automatic and chooses its own microphone setting to best suit the noisy environment it finds itself in – therefore, delivering uncompromised intelligibility of speech in background noise. It can be put on a table, held in the hand or worn around the speakers neck.

Feature overview

- Proven Roger speech-in-noise performance
- Fully automated microphone settings
- Manual microphone mode option available
- For virtually every hearing instrument, CI and BAHA, there is a compatible Roger receiver
- Audio input for connection to multimedia devices
- Wideband audio Bluetooth (HD voice)
- Used as standalone or with other Roger microphones
- Operating time: 7 hours (5 hours with active Bluetooth call)
- Operating range: 10 meters / 33 feet (typical)
20 meters / 66 feet (ideal conditions)

How to use



Compatibility

- Compatible with virtually every brand of hearing aid, Cochlear Implant and Bone Anchored Hearing Aid

Roger Clip-On Mic – The most powerful wireless partner microphone



The **Roger Clip-On Mic** is a small microphone that is clipped onto the clothes of the conversation partner of the hearing aid wearer. The conversation partner then speaks into the Roger Clip-On Mic and the sound is transmitted over distance, directly to the hearing aid wearer's hearing aids. It uses Roger technology to transmit and therefore offers unparalleled sound quality and speech intelligibility in background noise.

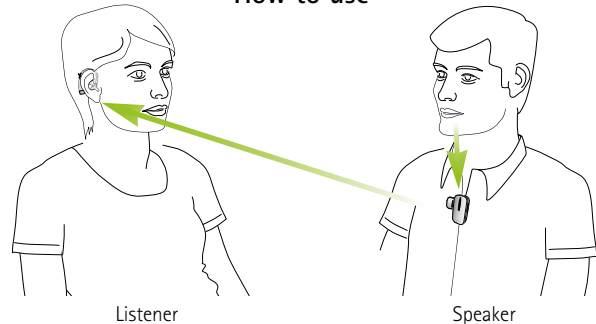
Feature overview

- Proven Roger performance in noise and over distance
- One-click connection – no programming needed
- Audio input for connection to multimedia devices
- Use as standalone or with other Roger microphones
- Operating time: 6 hours
- Operating range: 10 meters / 33 feet (typical)
20 meters / 66 feet (ideal conditions)

Compatibility

- Compatible with virtually every brand of hearing aid, Cochlear Implant and Bone Anchored Hearing Aid

How to use



Roger EasyPen – The simply smart



The **Roger EasyPen** is an exciting product for people who desire ultimate simplicity with full Roger performance and do not need Bluetooth functionality or manual microphone control. It features premium Roger speech-in-noise and over distance performance, it is the smart solution to overcome difficult listening situations. It can be used as a standalone microphone or alongside other Roger EasyPens, Roger Pens or Roger Clip-On Mics.

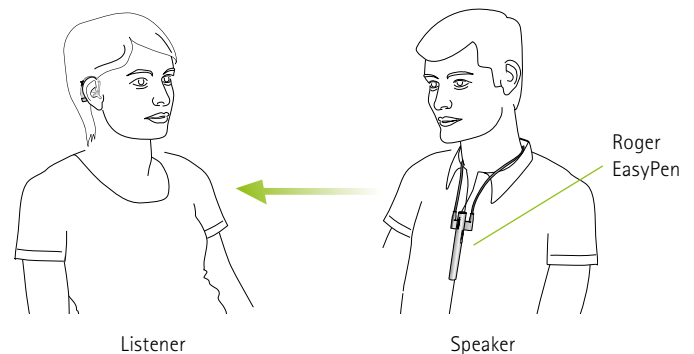
Feature overview

- Fully automated settings
- One-click connection
- Audio input for connection to multimedia devices
- Operating time: 7 hours (5 hours with active Bluetooth)
- Operating range: 10 meters / 33 feet (typical)
20 meters / 66 feet (ideal)

Compatibility

- Compatible with virtually every brand of hearing aid, Cochlear Implant and Bone Anchored Hearing Aid

How to use



Life is on

At Phonak, we believe that hearing well is essential to living life to the fullest. For more than 70 years, we remain true to our mission by developing pioneering hearing solutions that change people's lives to thrive socially and emotionally.

www.phonakpro.com

Phonak AG
Laubisrütistrasse 28
8712 Stäfa
Switzerland

